

**Perry  
Park  
Entry**

# Entry Way Concepts

Community Meeting  
March 26th, 2025

# TABLE OF CONTENTS

Community Input

Summarized Meeting Comments and Community Resources

Entryway Concepts

Option 1

Option 2

Option 3

Comparison and Discussion

Next Steps

## **Community Input**

### **Plant Selection**

- Emphasis on native and natural plantings for a cohesive aesthetic with some native perennials.
- Plants Palette to be aware of fire, water, and animal-browsing concerns
- Consideration of tree heights for appropriate scale and visibility. *Stated desire to bring that character forward to match surrounding area.*

### **Materials & Aesthetic Considerations**

- Desired natural, native look for overall design.
- Use of red stone – potential sources to be explored on-site.
  - Stone may match Country Club aesthetic.
- Reference to History where possible
- Up-thrust vertical rock formations as a design inspiration

### **Douglas County Relevant Code**

- We will need to pursue a permit based on size
- Sign height is limited to 15'
- 10' setback minimum with varying distance based on height
- Sign area of 50-100' (community size maxes this out)

### **Hardscape & Structural Elements**

- Fence removal is an option.
- Possible hardscape buffer to complement landscaping.
- Possibility for design grading to raise these areas as needed.

### **Lighting & Visibility**

- GFI outlets to support holiday lighting installations.
- Cognizant of Conservancy regulations and dark sky compliance

### **Historical & Design Influence**

- Original site plan by F.L. Olmsted.
- Stage Coach Stop
- Unparalleled natural character and scenic quality

## Letter Size vs. Distance

## Viewing Exposure in Seconds

Character Height	Optimal Viewing Distance	Max Viewing Distance	Speed of Viewer				
			20 mph	30 mph	40 mph	50 mph	60 mph
3"	30'	100'	3.4	2.5	1.7	1.3	.9
4"	40'	150'	5.1	3.4	2.5	2.0	1.4
6"	60'	200'	6.8	4.5	3.4	2.7	1.9
8"	80'	350'	12.0	7.9	5.9	4.7	3.4
9"	90'	400'	13.6	9.0	6.8	5.4	3.8
10"	100'	450'	15.3	10.2	7.6	6.1	4.3
12"	120'	525'	17.9	11.9	8.9	7.1	5.1
15"	150'	630'	21.5	14.3	10.7	8.5	6.1
18"	180'	750'	25.59	17.0	12.7	10.2	7.3
24"	240'	1000'	34.1	22.7	17.0	13.6	9.7
30"	300'	1250'	42.6	28.4	21.3	17.0	12.1
36"	360'	1500'	51.1	34.0	25.5	20.4	14.6
42"	420'	1750'	59.7	39.7	29.8	23.8	17.0
48"	480'	2000'	68.2	45.4	34.1	27.2	19.4
60"	600'	2500'	85.3	56.81	42.6	34.1	24.3

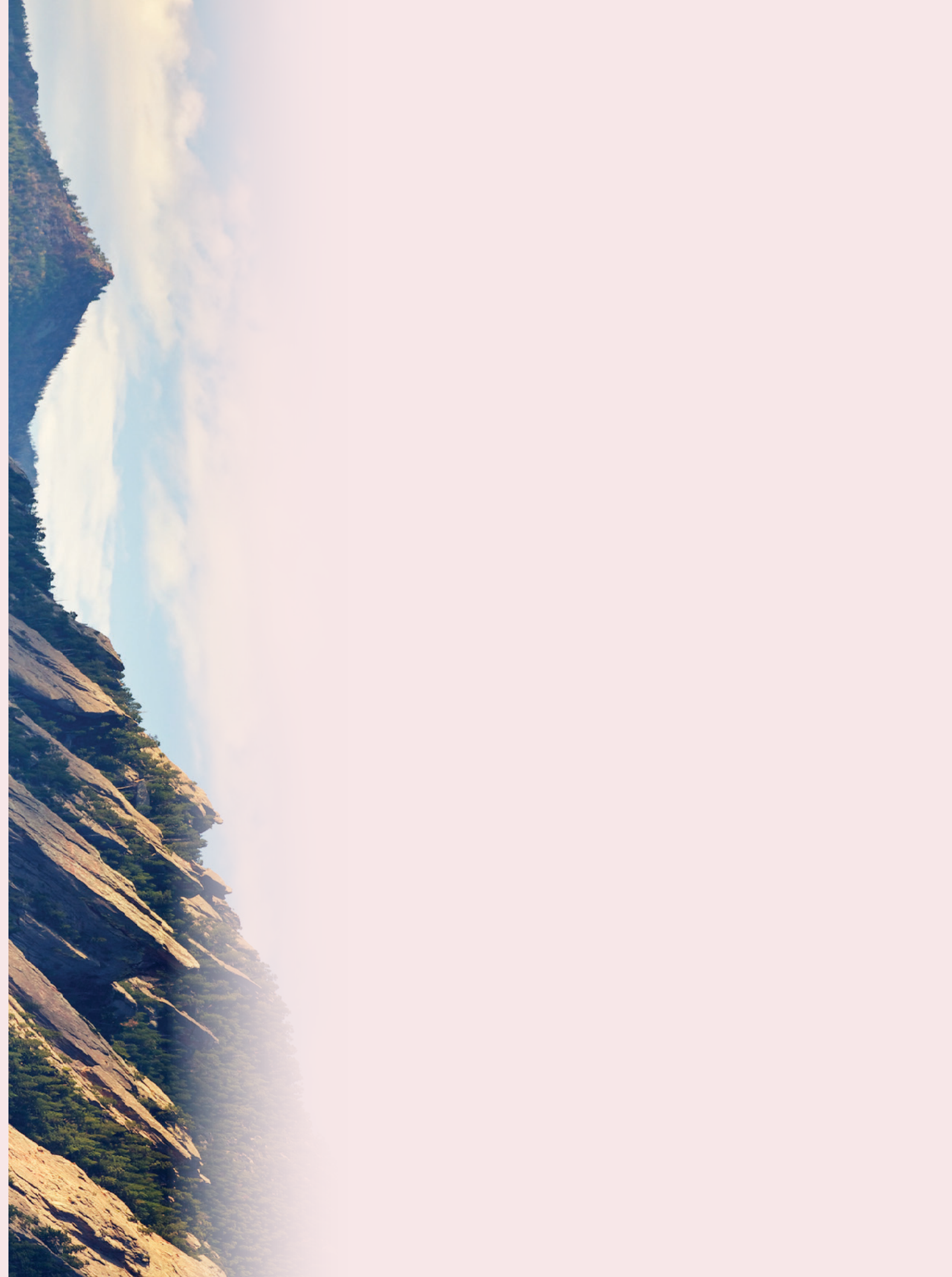
The letter style used for measuring is a sans serif face with medium stroke, such as Arial Bold. Based on black letters on white background. Distance may vary 10% with various color combinations. Viewing ranges approximate.

# **Entry Way Concepts**

*Concept 1*

## **Warm Welcome**

Nestled between timeless formations of stone, Perry Park welcomes residents with a sense of grounding and warmth. The carefully placed boulders echo the region's natural geomorphology, framing the entryway with the same strength and character that define the land. Rich, warm tones in the materials and plantings reflect the shifting hues of the landscape, creating an inviting threshold that feels both enduring and organic. This is a place shaped by nature's artistry—a community emerging in harmony with the land's storied embrace.

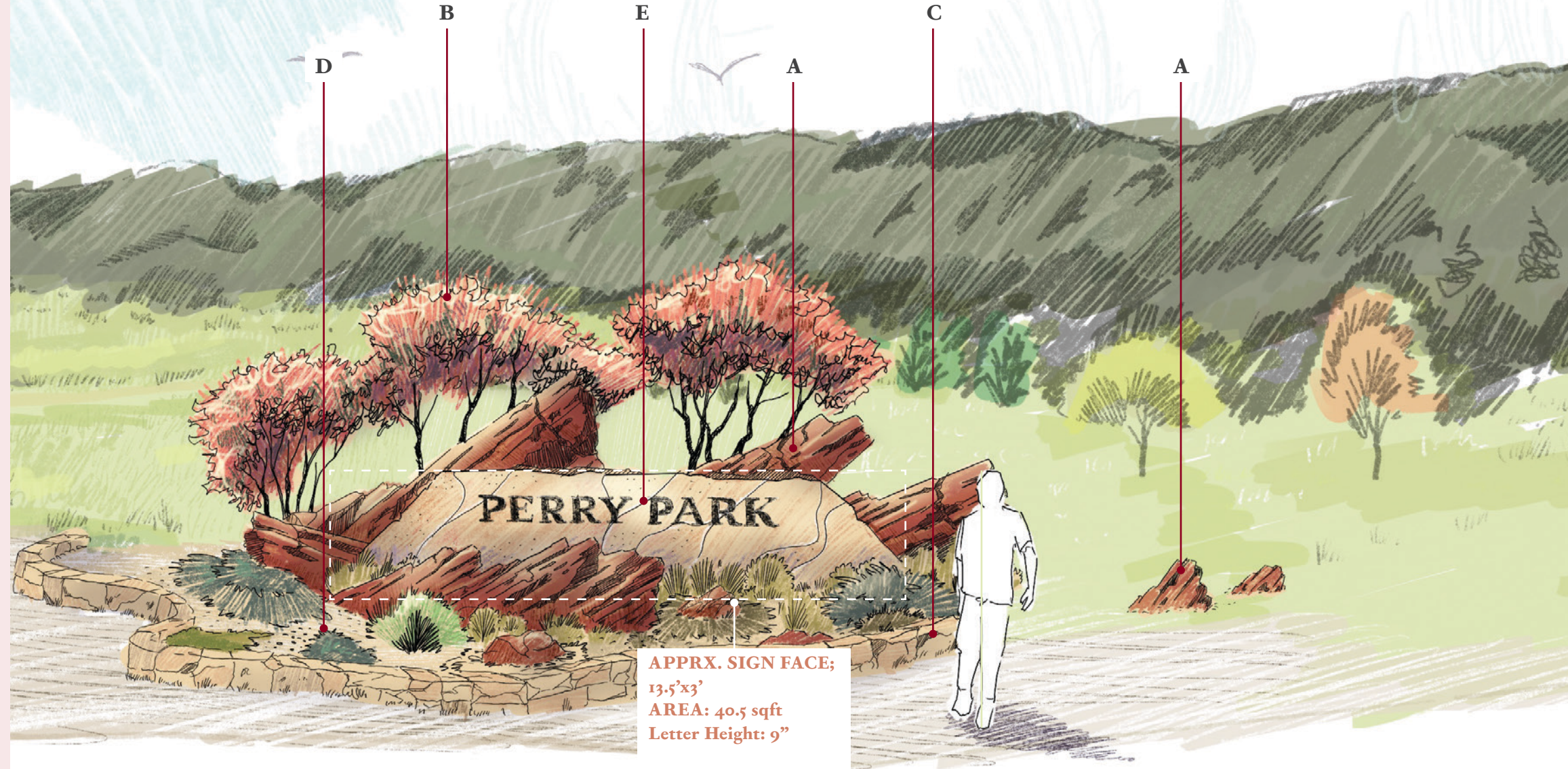


Concept 1 :: Warm Welcome





Concept 1 :: Warm Welcome



APPRX. SIGN FACE;  
13.5'x3'  
AREA: 40.5 sqft  
Letter Height: 9"



local geomorphology



Warm Plant Palettes



Sign Face and Edging Material



Natural Low Evergreens



shallow pin mount corten steel letters

*Concept 2*

## **Legacy Entry**

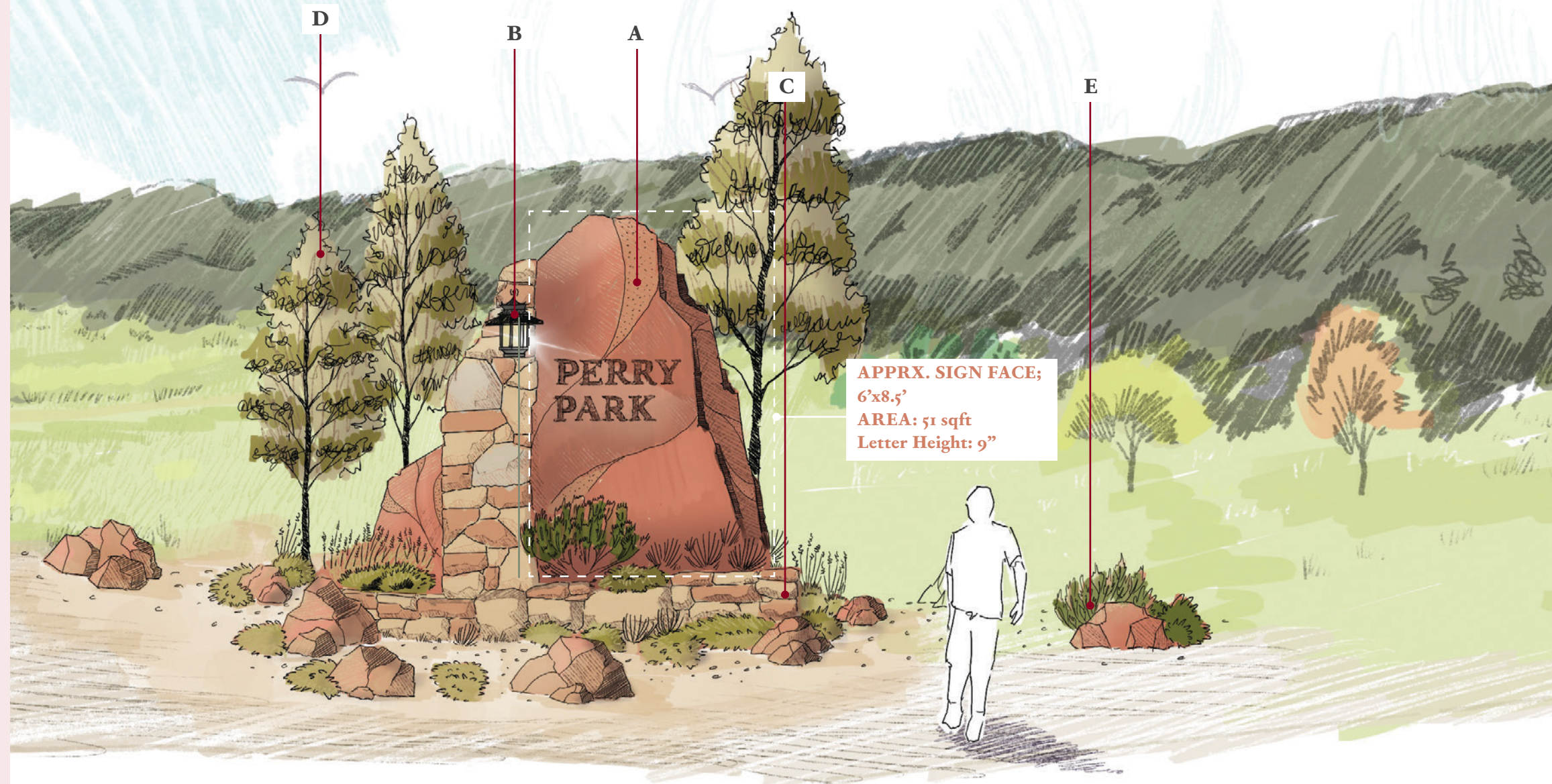
Drawing inspiration from the refined architecture of the community's country club and the region's rich history, Perry Park stands as a beacon of timeless craftsmanship. The entryway signage reflects the stone detailing that defines the area's architectural vernacular, seamlessly integrating natural textures to create a minor follie. Thoughtfully selected materials—handhewn masonry, minor metalwork, and strategic stone shaping—pay homage to the enduring legacy of place. At dusk, the stagecoach-inspired lantern's welcoming glow illuminates the turn and path ahead, paying tribute to a destination over 130 years in the making.



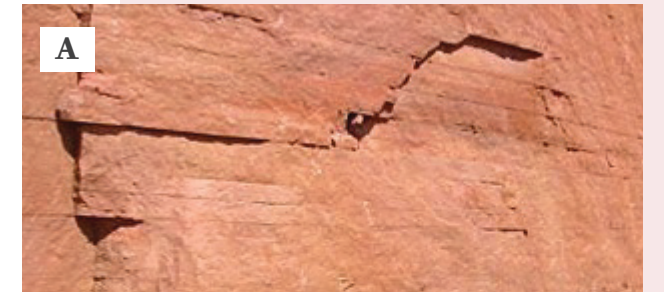
Concept 2 :: Legacy Entry



Concept 2 :: Legacy Entry



APPRX. SIGN FACE;  
6'x8.5'  
AREA: 51 sqft  
Letter Height: 9"



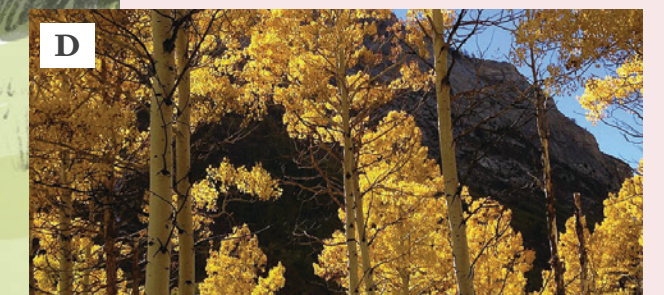
Upright Redstone



Carriage Lantern Inspired Lighting



Colorado Stone matching PPC



Quaking Aspen for Seasonal Interest

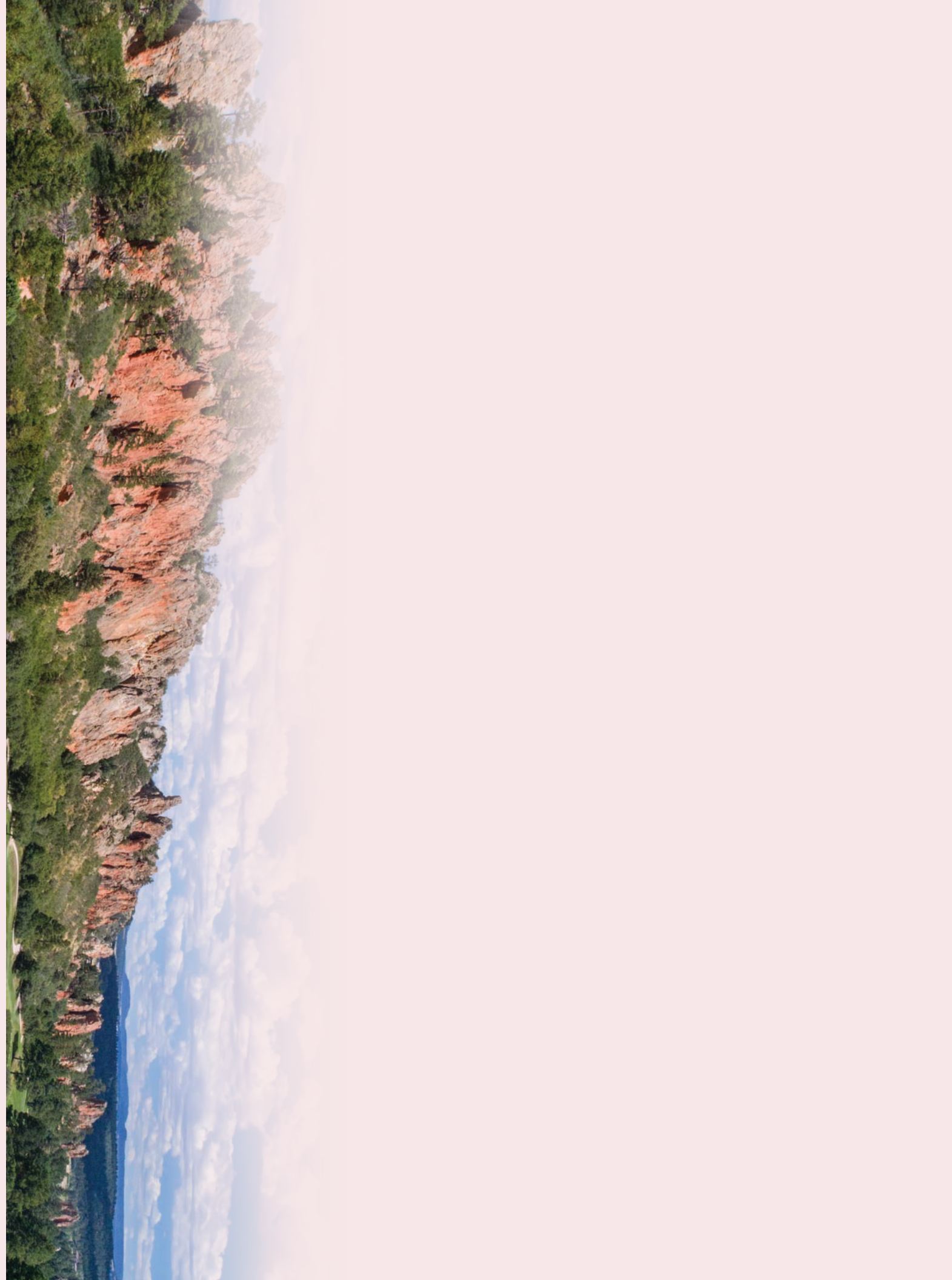


Sandstone Echoes

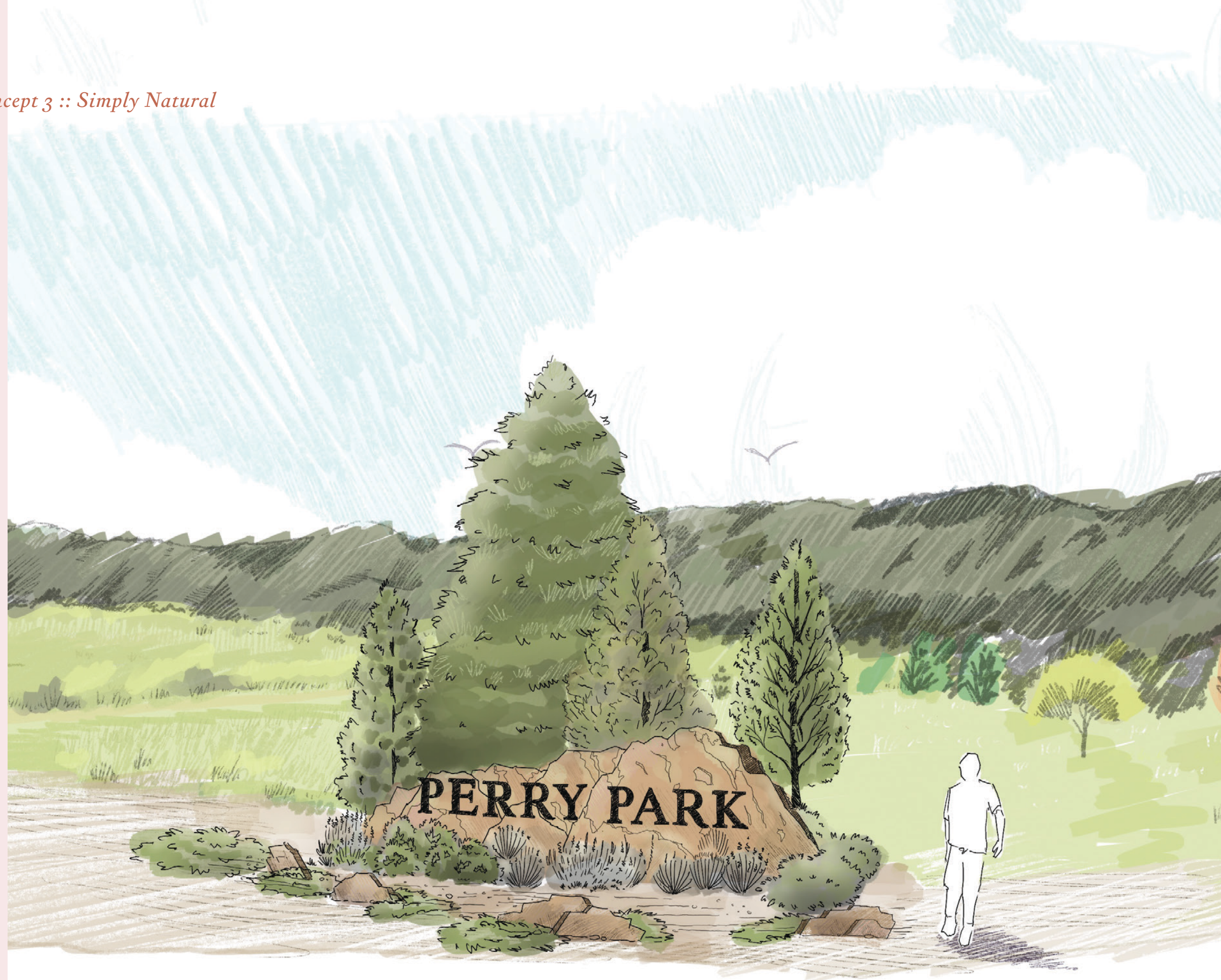
*Concept 3*

## **Simply Natural**

Rooted in the natural rhythm of the land, Perry Park seamlessly mirrors the surrounding landscape with an understated, organic presence. Towering evergreens frame the entry, drawing the essence of the forest forward and creating a quiet transition between nature and community. Upthrust stone slabs rise from the earth, their raw edges and varied heights evoking the rugged beauty of exposed rock formations. Simple yet striking, this design relies on natural materials and subtle dimensionality to create a landmark that feels both timeless and effortlessly integrated into its environment.



*Concept 3 :: Simply Natural*



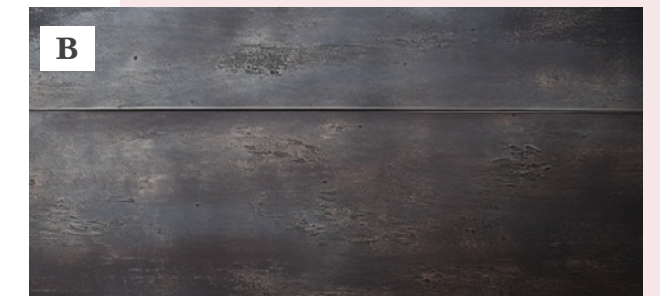
Concept 3 :: Simply Natural



APPRX. SIGN FACE;  
13.5' x 3.75'  
AREA: 51 sqft  
Letter Height: 14"



Redstone Flagstone



Distressed Steel Lettering



Dense Evergreen Background



Boulder and Perennial Outcrops

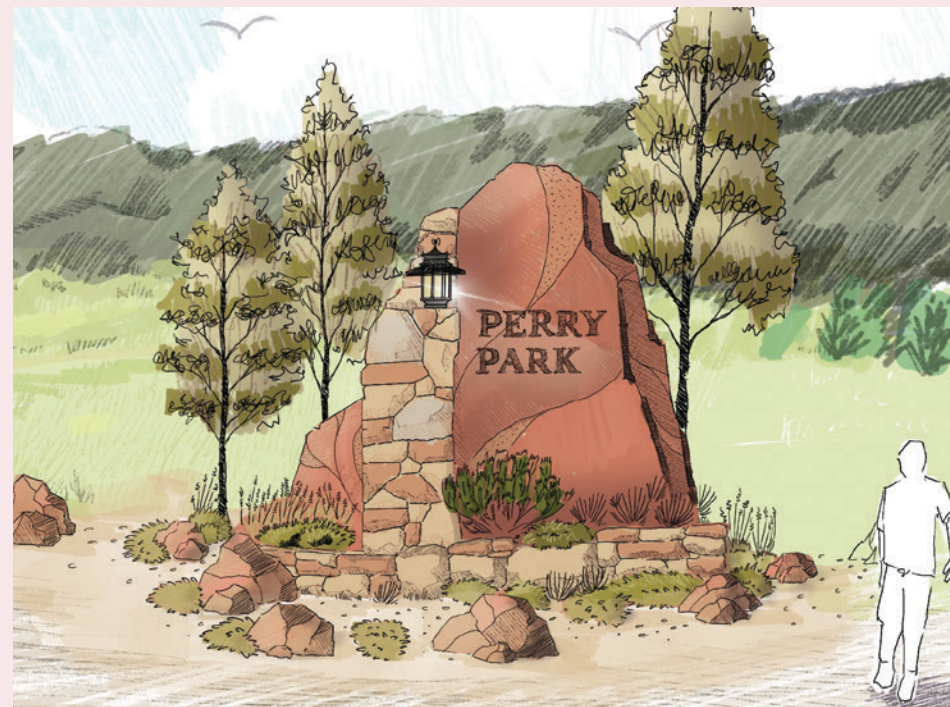
## **Comparison And Discussion**



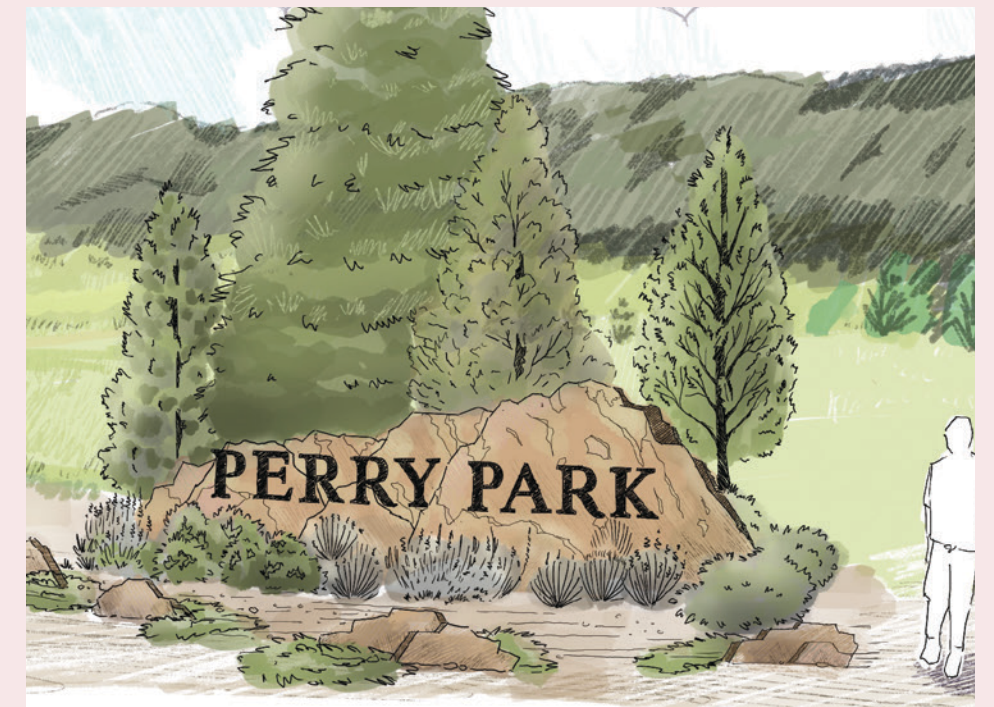
*Side by Side Concepts*



*Concept 1 :: Warm Welcome*



*Concept 2 :: Legacy Entry*



*Concept 3 :: Simply Natural*

**Thank You!**